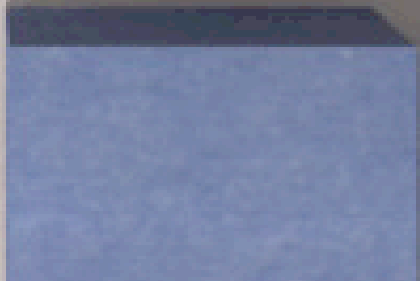


# STALACS



# STALACS

CSISOUNDCORE®

## INTRODUCTION



Stalacs makes a serious impression with a unique approach to sound absorption. These ceiling-affixed forms maximize surface area and stand at intervals to make the most effective use of their noise-cancelling abilities, providing quieter rooms with sleek aesthetics at an efficient value.

# STALACS

CSISOUNDCORE®

## SPECIFICATIONS

<b>CONTENT</b>	Soundcore® acoustic felt
<b>NRC RATING</b>	0.45-0.9 NRC depending on installation
<b>SIZING</b>	Custom Sizing Available
<b>WEIGHT</b>	Varies by design; 0.5-1 lb / ft <sup>2</sup>
<b>COLORS</b>	16 premier colorways
<b>INSTALLATION</b>	CSI Ceiling Attachment System
<b>FIRE RATING</b>	ASTM E84, Class-A Fire Rated Available
<b>ENVIRONMENTAL</b>	Contributes to LEED v4 Credits
<b>MAINTENANCE</b>	Vacuum to remove dust Clean spills with clean damp cloth, soap, water. Carpet and fabric cleaners. Always test on hidden areas first.



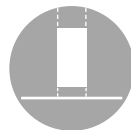
Wall Mounted



Ceiling Mounted



Ceiling Suspended



Fully Suspended



Mobile



Free Standing



Modular



Furniture Attachment

# STALACS

CSISOUNDCORE®

## FEATURES



### FIRE RATED

Class A rating, complies with ASTM E84.



### IMPACT RESISTANT

Impact resistant and shock absorbent.



### ENVIRONMENTALLY FRIENDLY

100% recyclable, VOC free, non-toxic and non-allergenic.



### DURABLE

Will not deteriorate or change color and is non-hygroscopic.



### TACKABLE

Pinnable surface with superior holding properties.



### ACOUSTICAL INSULATION

Outstanding performance in sound absorption.

# STALACS

CSISOUNDCORE®

ELEVATION



Ceiling  
Mounted



# STALACS

CSISOUNDCORE®

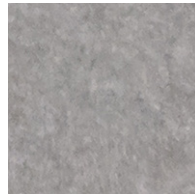
## COLORWAYS



**SND102**  
Morning Fog



**SND110**  
Starry Night



**SND316**  
Ash



**SND313**  
Dusk



**SND034**  
Granite Peak



**SND019**  
Linen



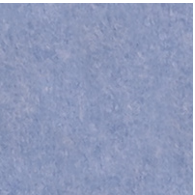
**SND105**  
Sand Dollar



**SND310**  
Verdant



**SND103**  
Storm Cloud



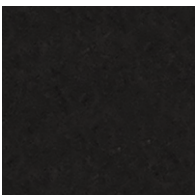
**SND042**  
Denim



**SND106**  
Goldfinch



**SND107**  
Grasshopper



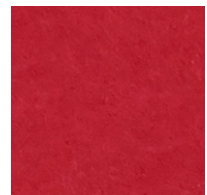
**SND038**  
Inkwell



**SND101**  
Commodore



**SND104**  
Pumpkin



**SND108**  
Ablaze