

# PROFILE PLUS SURFACES 001

SUR-PFP-001

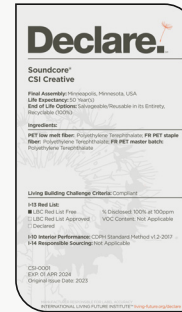
# Product Specifications

<b>Product Name</b>	Profile Plus Surfaces 001
<b>Product ID</b>	SUR-PFP-001
<b>Acoustics</b>	0.70 - 0.80 NRC*
<b>Lead Time</b>	Lead time is dependent on project size. Contact us for more information.
<b>Durability</b>	Contract

<b>Warranty</b>	Comes with industry-leading standard warranty.
<b>Flammability</b>	ASTM E84: Class A
<b>Custom</b>	Custom colors and manufacturing services available. Additional charges and lead times may apply.
<b>Maintenance</b>	Vacuum occasionally to remove airborne dust or debris. Mild detergents or soaps may be used to remove stains. For detailed care instructions, refer to the <b>CSI Creative Maintenance Information</b> document.

# Material Specifications

	<b>Soundcore®</b>	<b>PoshFelt®</b>
<b>Content</b>	Recycled PET acoustic felt	100% Merino or Karakul wool acoustic felt
<b>Weathering</b>	Colorfast, non-deteriorating, non-hygroscopic	Colorfast, non-deteriorating, non-woven, moisture resistant
<b>Environmental</b>	Recycled PET acoustic felt is 60% post-consumer recycled content and is 100% recyclable. Contributes points toward LEED v4, CDPH v1.2, VOC free, non-toxic, non-allergenic, anti-microbial - does not attract mold and mildew. Compliant with Living Building Challenge criteria & DECLARE Red List Free.	100% organic wool design felt is a rapidly renewable resource and is 100% biodegradable/compostable. Contributes points toward LEED v4, CDPH v1.2, VOC free, no chemical irritants, no formaldehyde, and is free of other harmful substances. Compliant with Living Building Challenge criteria & DECLARE Red List Free.
<b>Variation</b>	PET felt panels are created through a manufacturing process known as 'felting'. This process results in a heathered appearance. Multiple color tones may appear in the same panel. Slight color variations should be expected.	Due to its 100% natural origin, the raw fibers of wool felt contain inclusions and color variations throughout the material. Color matching is not guaranteed between dye lots and inconsistencies may be more prominent in volumes that exceed the normal commercial standard.

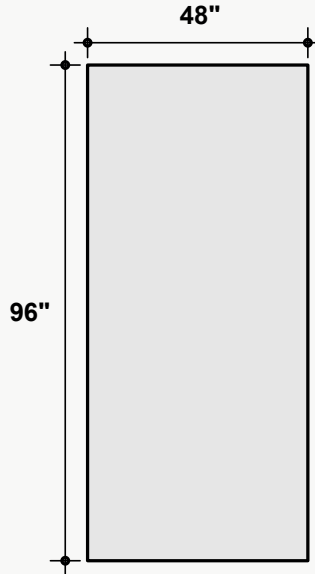


\*Approximate. NRC rating may vary due to product dimensions and spacing.

# Dimensions

## Standard Unit Dimensions

Typical ranges for height and width.

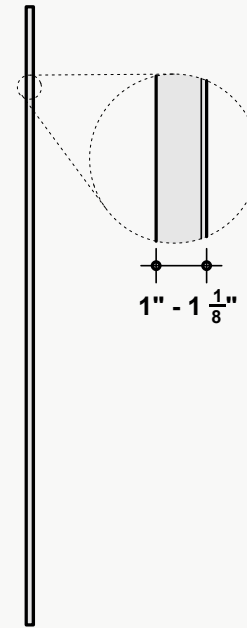


## Custom Opportunity

Product dimensions can be manipulated in order to fit your design aesthetic and site conditions.

## Standard Unit Thicknesses

Thickness is dependent on material layer selection.



## Installation Options\*

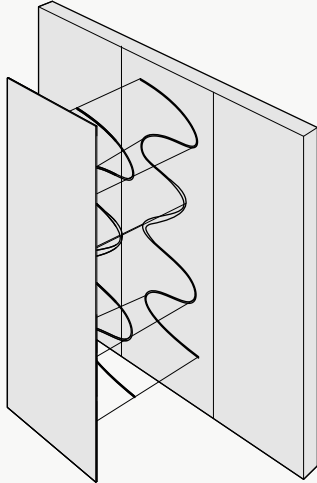
All products and installation methods can be **customized** to meet the unique requirements of your space.

### Adhesive Direct Advantages

Attachment solution using an adhesive to apply directly to an existing surface or substrate.

- + Fastest installation time
- + No gap between target surface and product
- + Lowest profile installation option
- + Easiest to install
- + Most versatile installation option

Available methods: Construction Adhesive, Peel & Stick, Custom

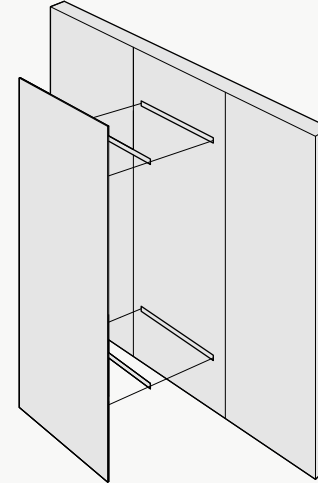


### Mechanical Direct Advantages

Attachment solution using physical hardware to attach to an existing surface or substrate.

- + No clamping or dry time necessary
- + Easy to remove and does not damage the substrate when removed
- + Most appropriate installation solution for heavier products
- + Provides an opportunity for an air gap, which can increase the acoustic value of a product

Available methods: Z-Clips, Panel Clips, Standoffs, Screw & Washer, Magnet, Custom

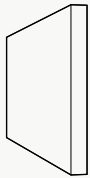


\*Not all listed attachment methods may be applicable to this product.

# Material Layers

## Soundcore Plus®

Our recycled PET felt creates an acoustic barrier, defending against wandering white noise and irritating echoes. Soundcore Plus® is our line of extra-thick PET Felt, providing additional acoustic benefits and a larger visual impact.

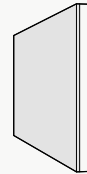


**Single Layer**  
1" Thickness



## PoshFelt® Exposed Edge

100% organic, natural wool design felt brings out the best experience in your space with color, comfort, and simple sustainability. Exposed edge products leave the Soundcore® layer uncovered, allowing for unique color combinations.

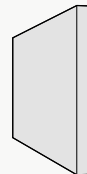


**Multi-Layer**  
Adds 1/8"-1/4" to Material Thickness



## PoshFelt® Wrapped Edge

Wrapped edge products use additional PoshFelt® material to hide the Soundcore® layer, allowing for a uniform look across the entire product.



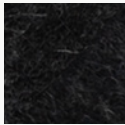
**Multi-Layer**  
Adds 1/8"-1/4" to Material Thickness



PoshFelt® | 3mm Thickness



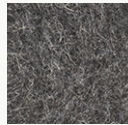
**PSH005**  
Black Beauty



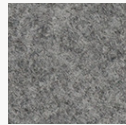
**PSH161**  
Black Swan



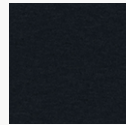
**PSH266**  
Koala



**PSH001**  
Gray Matter



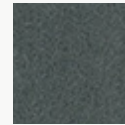
**PSH176**  
Warmstone



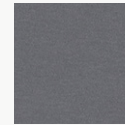
**PSH627**  
Blackberry



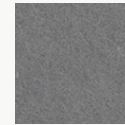
**PSH265**  
Slag



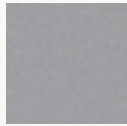
**PSH513**  
Gravel



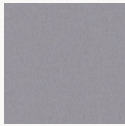
**PSH512**  
Ash Plum



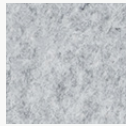
**PSH004**  
Porpoise



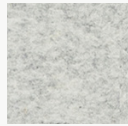
**PSH625**  
Silver Chain



**PSH609**  
Cityscape



**PSH300**  
Crevasse



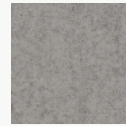
**PSH299**  
Mountain Breeze



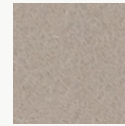
**PSH515**  
Blizzard



**PSH175**  
Dovetail



**PSH624**  
Dapple Gray



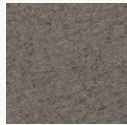
**PSH127**  
Mocha



**PSH635**  
Eggshell



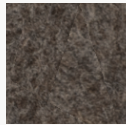
**PSH178**  
Fawn



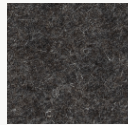
**PSH520**  
Silt



**PSH002**  
Heather



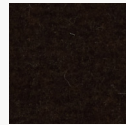
**PSH003**  
Otter



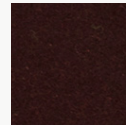
**PSH179**  
Arctic Seal



**PSH180**  
Iron Ore



**PSH545**  
Henna



**PSH249**  
French Press



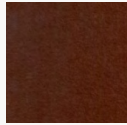
**PSH248**  
Mink



**PSH531**  
Garnet



**PSH146**  
Auburn



**PSH521**  
Cocoa



**PSH269**  
Canyon



**PSH253**  
Toffee



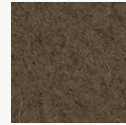
**PSH602**  
Cafe



**PSH268**  
Gingerbread



**PSH255**  
Tropical Walnut



**PSH504**  
Earth



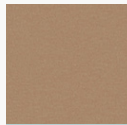
**PSH505**  
Garrigue



**PSH503**  
Savanna



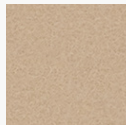
**PSH509**  
Cairo



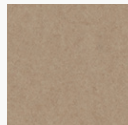
**PSH621**  
Pan



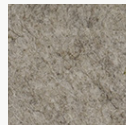
**PSH281**  
Great Plains



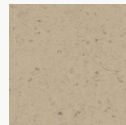
**PSH291**  
Gobi



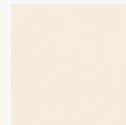
**PSH630**  
Sand Dune



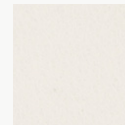
**PSH006**  
Shiitake



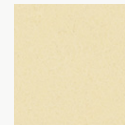
**PSH519**  
Cupcake



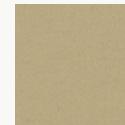
**PSH118**  
Ivory Lace



**PSH174**  
Cotton



**PSH293**  
Pound Cake

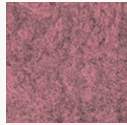


**PSH637**  
Chiffon

PoshFelt® | 3mm Thickness

									
<b>PSH304</b> Sugar Cookie	<b>PSH301</b> Tumbleweed	<b>PSH541</b> Banana Bread	<b>PSH622</b> Corn	<b>PSH215</b> Raincoat	<b>PSH305</b> Dandelion	<b>PSH216</b> Lion's Den	<b>PSH015</b> Honey	<b>PSH217</b> Citrine	<b>PSH507</b> Hive
									
<b>PSH634</b> Amber	<b>PSH261</b> Pale Ale	<b>PSH638</b> Sunflower	<b>PSH549</b> Medallion	<b>PSH295</b> Sunrise Peach	<b>PSH610</b> Coral	<b>PSH632</b> Peach	<b>PSH251</b> Summer Dream	<b>PSH218</b> Citrus	<b>PSH532</b> Harvest
									
<b>PSH014</b> Knockout Orange	<b>PSH307</b> Orange Nectar	<b>PSH633</b> Clementine	<b>PSH245</b> Fire Agate	<b>PSH525</b> Olympus	<b>PSH640</b> Rusted	<b>PSH528</b> Ferrous	<b>PSH296</b> Paprika	<b>PSH220</b> Red Earth	<b>PSH530</b> Hot Iron
									
<b>PSH537</b> Cardinal	<b>PSH535</b> Guppy	<b>PSH139</b> Cayenne	<b>PSH008</b> Bonfire	<b>PSH308</b> Scarlet	<b>PSH009</b> Poinsettia	<b>PSH540</b> Devil's Food	<b>PSH527</b> Red Velvet	<b>PSH644</b> Maroon	<b>PSH539</b> Mahogany
									
<b>PSH210</b> Sangria	<b>PSH211</b> Cherry Chutney	<b>PSH212</b> Vino	<b>PSH514</b> Red Wine	<b>PSH617</b> Evening Gown	<b>PSH649</b> Pomegranate	<b>PSH273</b> Ultraviolet	<b>PSH137</b> Passion Flower	<b>PSH272</b> Hotwire	<b>PSH302</b> Heather Pink

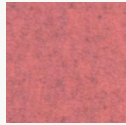
PoshFelt® | 3mm Thickness



PSH292  
Sakura Mist



PSH202  
Crush



PSH560  
Schiava



PS647  
Eden Rose



PSH643  
Rhododendron



PSH559  
Monroe



PSH544  
Dragonfruit



PSH309  
Allium



PSH205  
Mulberry



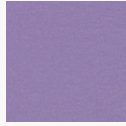
PSH546  
Tyrian Plum



PSH142  
Plum Purple



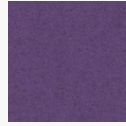
PSH523  
Violet Sky



PSH612  
Lilac



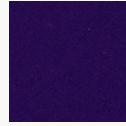
PSH286  
Viper



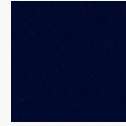
PSH646  
Lupine



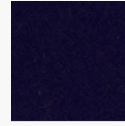
PSH274  
Amethyst



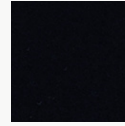
PSH275  
Skyfall



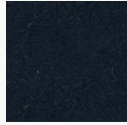
PSH241  
Tranquilo



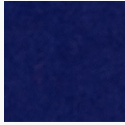
PSH550  
Mariana



PSH277  
Shade



PSH310  
Deep Royal



PSH160  
Admiral Blue



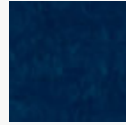
PSH561  
Neptune



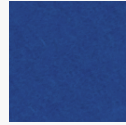
PSH239  
Speckled Navy



PSH548  
Ultramarine



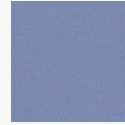
PSH645  
Space



PSH508  
Oahu



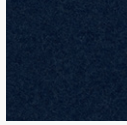
PSH510  
Ozone



PSH615  
Imagine



PSH614  
Blueberry



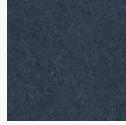
PSH636  
Navy Blue



PSH278  
Squid Ink



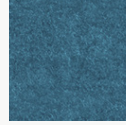
PSH260  
Twilight



PSH601  
Royalty



PSH616  
Fountain



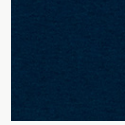
PSH604  
Atlantic



PSH237  
Hotspring



PSH238  
Cobalt



PSH516  
Actun



PSH502  
Pacific



PSH511  
Lagoon



PSH152  
Blue Nile



PSH149  
Jamaica Bay



PSH623  
Steel Gray



PSH648  
Aegean



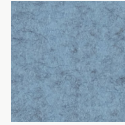
PSH236  
Aquamarine



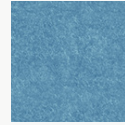
PSH016  
Freshwater



PSH306  
Swell



PSH608  
Diamond Dust



PSH605  
Meander



PoshFelt® | 3mm Thickness



PSH639  
Glacier



PSH606  
Midday



PSH650  
Waterfall



PSH287  
Sea Breeze



PSH628  
Cozumel



PSH631  
Adriatic



PSH552  
Cancun



PSH564  
Jazz



PSH517  
Sky Stone



PSH232  
Seaglass



PSH641  
Basil



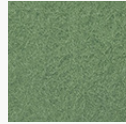
PSH629  
Robin's Egg



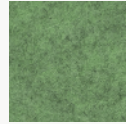
PSH642  
Blue Spruce



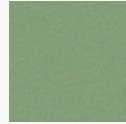
PSH618  
Iguana



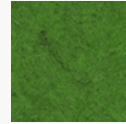
PSH213  
Meadow



PSH303  
Feather Moss



PSH619  
Springtime



PSH223  
Matrix



PSH164  
Fresh Lime



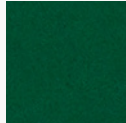
PSH225  
Everglade



PSH226  
Grove



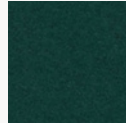
PSH298  
Peacock



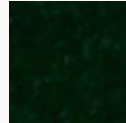
PSH234  
Ocean Trench



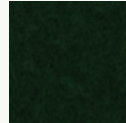
PSH311  
Emerald



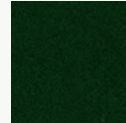
PSH626  
Evergreen



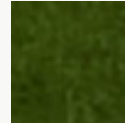
PSH553  
Conifer



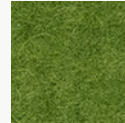
PSH228  
Forest Haze



PSH227  
Succulent



PSH563  
Rosemary



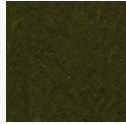
PSH555  
Hemlocks



PSH012  
Shamrock



PSH554  
Cyber Green



PSH501  
Mire



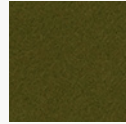
PSH506  
Bracken



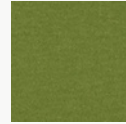
PSH312  
Safari



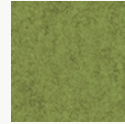
PSH611  
Haybale



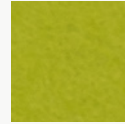
PSH230  
Camouflage



PSH556  
Avocado

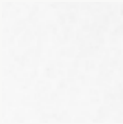


PSH562  
Aurora



PSH013  
Parakeet

Soundcore® Plus | 1" Thickness



SND900  
Polar

Soundcore® Plus *Special Order* | 1" Thickness



SND912  
Snapper



SND913  
Cherry



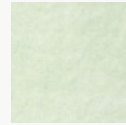
SND914  
Zinnia



SND916  
Starfruit



SND915  
Honeysuckle



SND917  
Vintage Mint



SND918  
Palawan



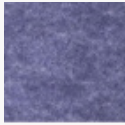
SND919  
Azure



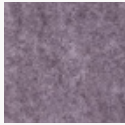
SND920  
Blue Racer



SND922  
Hyacinth



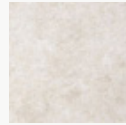
SND921  
Currant



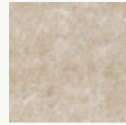
SND923  
Bell Flower



SND911  
Blush



SND906  
Sandy Marble



SND905  
Feldspar



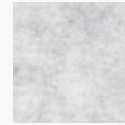
SND907  
Mule Deer



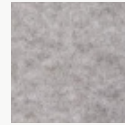
SND908  
Fern Moss



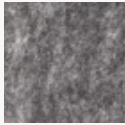
SND909  
Serpent



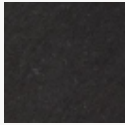
SND903  
Quartz



SND901  
Sterling



SND904  
Timber Wolf



SND902  
Anthracite



SND910  
Cypress