

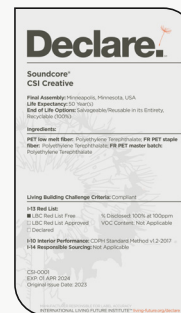
Product Specifications

Product Name	Stacked Baffles 006
Product ID	BFL-STK-006
Acoustics	1.05 NRC*
Lead Time	Lead time is dependent on project size. Contact us for more information.
Durability	Contract

Warranty	Comes with industry-leading standard warranty.
Flammability	ASTM E84: Class A
Custom	Custom colors and manufacturing services available. Additional charges and lead times may apply.
Maintenance	Vacuum occasionally to remove airborne dust or debris. Mild detergents or soaps may be used to remove stains. For detailed care instructions, refer to the CSI Creative Maintenance Information document.

Material Specifications

	Soundcore®	PoshFelt®
Content	Recycled PET acoustic felt	100% Merino or Karakul wool acoustic felt
Weathering	Colorfast, non-deteriorating, non-hygroscopic	Colorfast, non-deteriorating, non-woven, moisture resistant
Environmental	Recycled PET acoustic felt is 60% post-consumer recycled content and is 100% recyclable. Contributes points toward LEED v4, CDPH v1.2, VOC free, non-toxic, non-allergenic, anti-microbial - does not attract mold and mildew. Compliant with Living Building Challenge criteria & DECLARE Red List Free.	100% organic wool design felt is a rapidly renewable resource and is 100% biodegradable/compostable. Contributes points toward LEED v4, CDPH v1.2, VOC free, no chemical irritants, no formaldehyde, and is free of other harmful substances. Compliant with Living Building Challenge criteria & DECLARE Red List Free.
Variation	PET felt panels are created through a manufacturing process known as 'felting'. This process results in a heathered appearance. Color or color tones may appear in the same panel. Slight color variations should be expected.	Due to its 100% natural origin, the raw fibers of wool felt contain inclusions and color variations throughout the material. Color matching is not guaranteed between dye lots and inconsistencies may be more prominent in volumes that exceed the normal commercial standard.

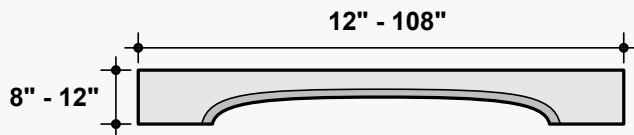


*Approximate. NRC rating may vary due to product dimensions and spacing.

Dimensions

Standard Unit Dimensions

Typical ranges for length and height.

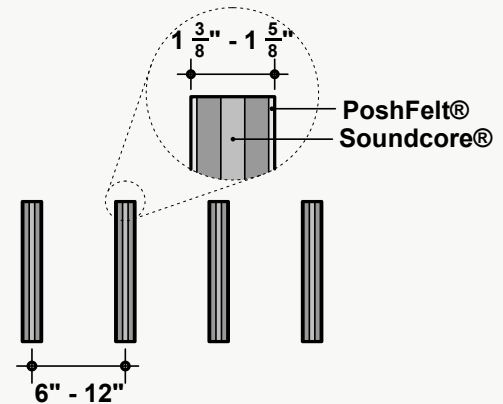


Custom Opportunity

Product dimensions can be manipulated in order to fit your design aesthetic and site conditions.

Standard Unit Thicknesses

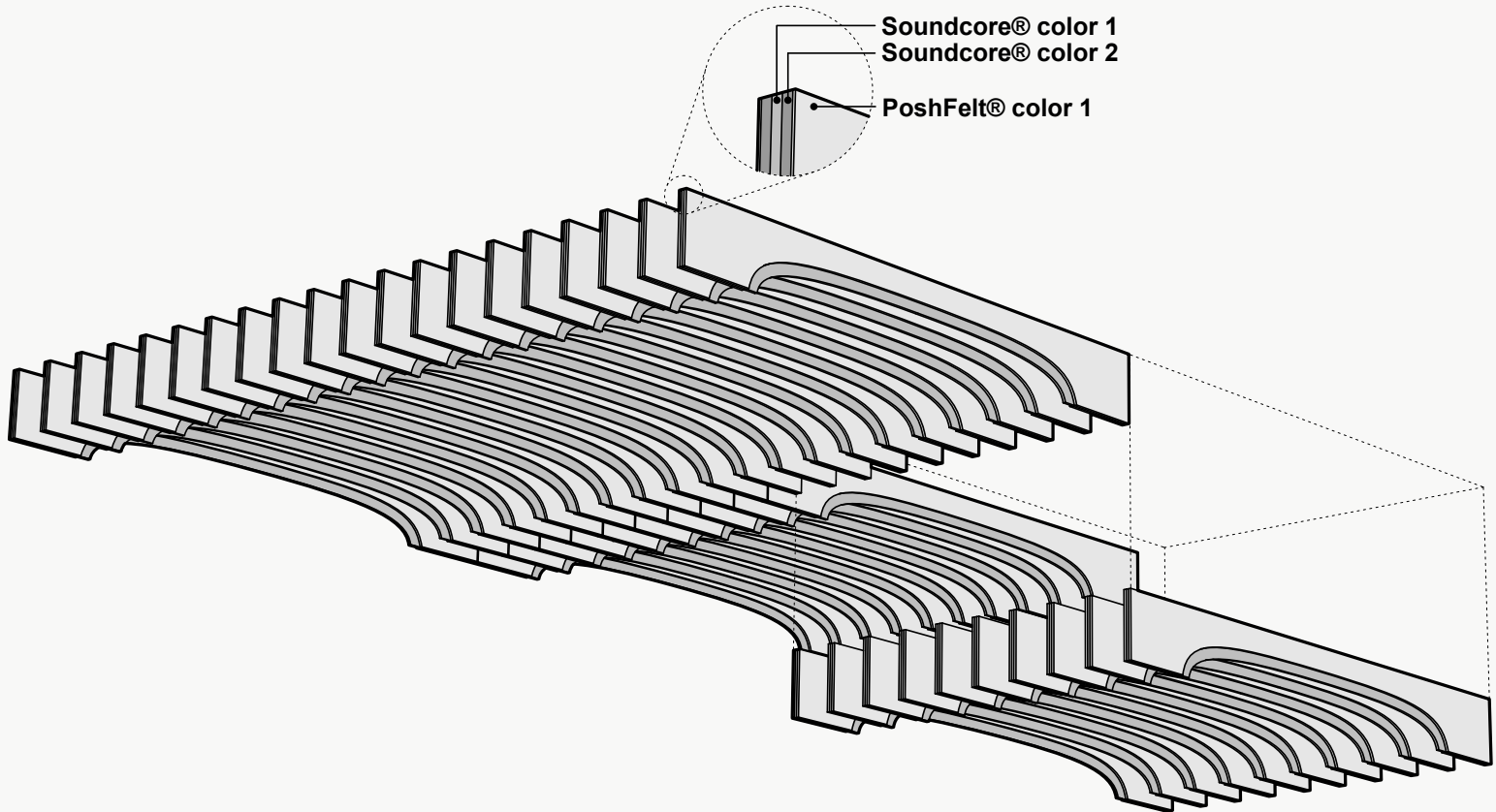
Thickness is dependent on material layer selection.



On-Center Spacing

Our standard product spacing is 6"-12" on-center. Acoustic performance of the product improves as spacing is reduced.

Product Details



Installation Options

All products and installation methods can be **customized** to meet the unique requirements of your space.

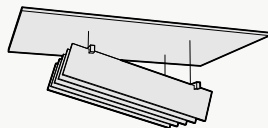
Rail Suspension Advantages

Rail suspension installation methods are designed for fast and easy installation by reducing the amount of suspension points. The rail structure acts as a guide for the baffles, maintaining baffle spacing and orientation while remaining easily customizable to fit most RCP layouts.

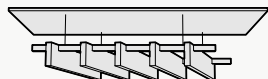
Pre-Defined Spacing



Consistent Angle



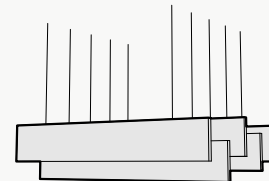
Non-Perpendicular Arrangements



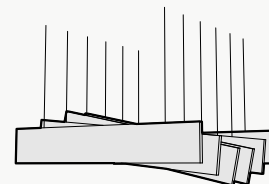
Individual Suspension Advantages

Individual suspension installation methods excel at accommodating irregular layouts. They are the most versatile installation style, and can be customized to fit even the most unique RCP layout.

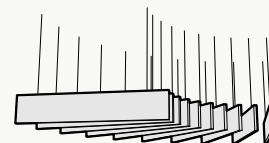
Height Variation



Angle Variation

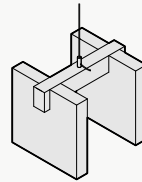


Non-Linear Arrangements

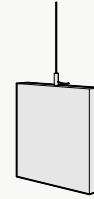


Attachment Methods*

Rail Suspension



Individual Suspension

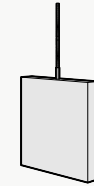
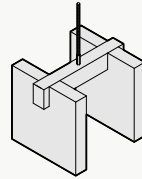


Aircraft Cable

- + Fastest/easiest height adjustment
- + Largest height adjustment range
- + Height and angle versatility
- + Accommodates uneven ceiling surfaces and MEP

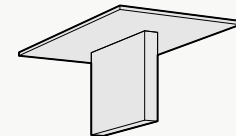
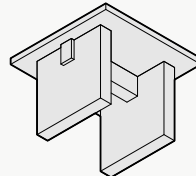
Threaded Rod

- + Reduced product sway
- + Height and angle versatility
- + Accommodates uneven ceiling surfaces and MEP



Mechanical Direct

- + Lowest profile installation method
- + Eliminates product sway
- + Connects to: Unistrut, ACT Grid, flat ceiling surfaces
- + Connections: Magnets, Grid Clips, Panel Clips, Metal Bracket, Custom

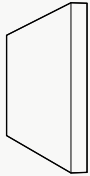


*Not all listed attachment methods may be applicable to this product.

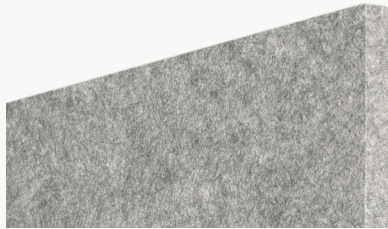
Material Layers

Soundcore®

Our recycled PET felt creates an acoustic barrier, defending against wandering white noise and irritating echoes.



Single Layer
½" Thickness



Soundcore® Wood Textures

Soundcore® wood textures provide the natural aesthetic of wood while maintaining all the acoustic benefits of PET felt. Custom texture opportunities are also available upon request.

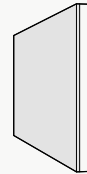


Single Layer
½" Thickness



PoshFelt® Exposed Edge

100% organic, natural wool design felt brings out the best experience in your space with color, comfort, and simple sustainability. Exposed edge products leave the Soundcore® layer uncovered, allowing for unique color combinations.



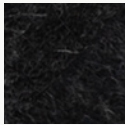
Multi-Layer
Adds ⅛"-¼" to Material Thickness



PoshFelt® | 3mm Thickness



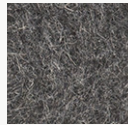
PSH005
Black Beauty



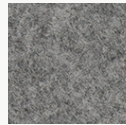
PSH161
Black Swan



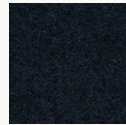
PSH266
Koala



PSH001
Gray Matter



PSH176
Warmstone



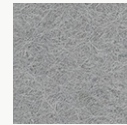
PSH627
Blackberry



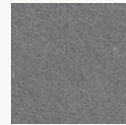
PSH265
Slag



PSH513
Gravel



PSH512
Ash Plume



PSH004
Porpoise



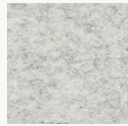
PSH625
Silver Chain



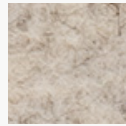
PSH609
Cityscape



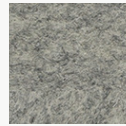
PSH300
Crevasse



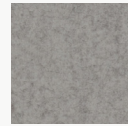
PSH299
Mountain Breeze



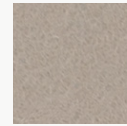
PSH515
Blizzard



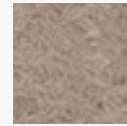
PSH175
Dovetail



PSH624
Dapple Gray



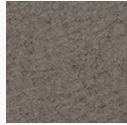
PSH127
Mocha



PSH635
Eggshell



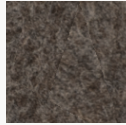
PSH178
Fawn



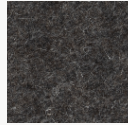
PSH520
Silt



PSH002
Heather



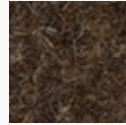
PSH003
Otter



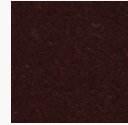
PSH179
Arctic Seal



PSH180
Iron Ore



PSH545
Henna



PSH249
French Press



PSH248
Mink



PSH146
Auburn



PSH521
Cocoa



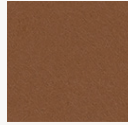
PSH269
Canyon



PSH253
Toffee



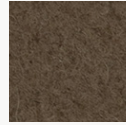
PSH602
Cafe



PSH268
Gingerbread



PSH255
Tropical Walnut



PSH504
Earth



PSH505
Garrigue



PSH503
Savanna



PSH509
Cairo



PSH621
Pan



PSH281
Great Plains



PSH291
Gobi



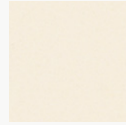
PSH630
Sand Dune



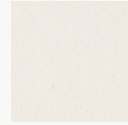
PSH006
Shiitake



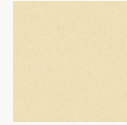
PSH519
Cupcake



PSH118
Ivory Lace



PSH174
Cotton



PSH293
Pound Cake



PSH637
Chiffon



PSH304
Sugar Cookie

PoshFelt® | 3mm Thickness



PSH301
Tumbleweed



PSH541
Banana Bread



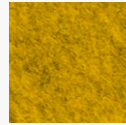
PSH622
Corn



PSH215
Raincoat



PSH305
Dandelion



PSH216
Lion's Den



PSH015
Honey



PSH217
Citrine



PSH507
Hive



PSH634
Amber



PSH261
Pale Ale



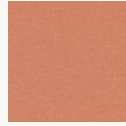
PSH638
Sunflower



PSH295
Sunrise Peach



PSH610
Coral



PSH632
Peach



PSH251
Summer Dream



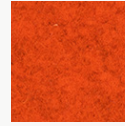
PSH218
Citrus



PSH532
Harvest



PSH014
Knockout Orange



PSH307
Orange Nectar



PSH633
Clementine



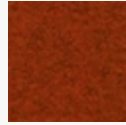
PSH245
Fire Agate



PSH525
Olympus



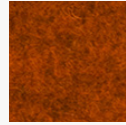
PSH640
Rusted



PSH528
Ferrous



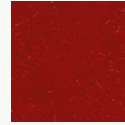
PSH296
Paprika



PSH220
Red Earth



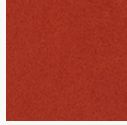
PSH530
Hot Iron



PSH537
Cardinal



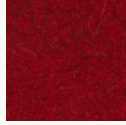
PSH535
Guppy



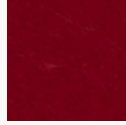
PSH139
Cayenne



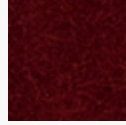
PSH008
Bonfire



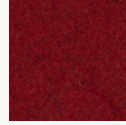
PSH308
Scarlet



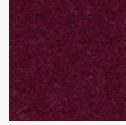
PSH009
Poinsettia



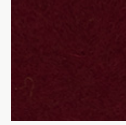
PSH540
Devil's Food



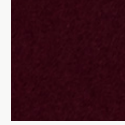
PSH527
Red Velvet



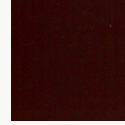
PSH644
Maroon



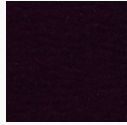
PSH210
Sangria



PSH211
Cherry Chutney



PSH212
Vino



PSH514
Red Wine



PSH617
Evening Gown



PSH649
Pomegranate



PSH273
Ultraviolet



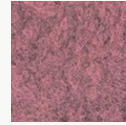
PSH137
Passion Flower



PSH272
Hotwire



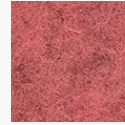
PSH302
Heather Pink



PSH292
Sakura Mist



PSH202
Crush



PSH560
Schiava

PoshFelt® | 3mm Thickness



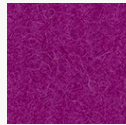
PSH647
Eden Rose



PSH643
Rhododendron



PSH559
Monroe



PSH544
Dragonfruit



PSH309
Allium



PSH205
Mulberry



PSH546
Tyrian Plum



PSH142
Plum Purple



PSH523
Violet Sky



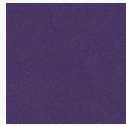
PSH612
Lilac



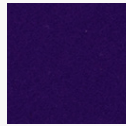
PSH286
Viper



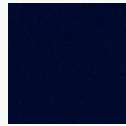
PSH646
Lupine



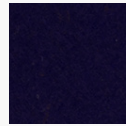
PSH274
Amethyst



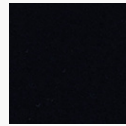
PSH275
Skyfall



PSH241
Tranquilo



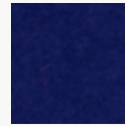
PSH550
Mariana



PSH277
Shade



PSH310
Deep Royal



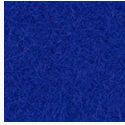
PSH160
Admiral Blue



PSH561
Neptune



PSH239
Speckled Navy



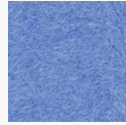
PSH548
Ultramarine



PSH645
Space



PSH508
Oahu



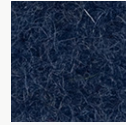
PSH510
Ozone



PSH615
Imagine



PSH614
Blueberry



PSH636
Navy Blue



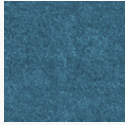
PSH278
Squid Ink



PSH260
Twilight



PSH616
Fountain



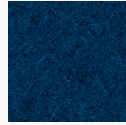
PSH604
Atlantic



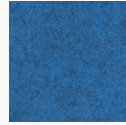
PSH237
Hotspring



PSH238
Cobalt



PSH516
Actun



PSH502
Pacific



PSH511
Lagoon



PSH152
Blue Nile



PSH149
Jamaica Bay



PSH623
Steel Gray



PSH648
Aegean



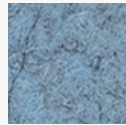
PSH236
Aquamarine



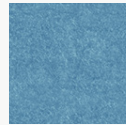
PSH016
Freshwater



PSH306
Swell



PSH608
Diamond Dust



PSH605
Meander



PSH639
Glacier



PSH606
Midday



PSH650
Waterfall

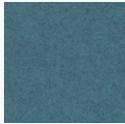


PSH287
Sea Breeze

PoshFelt® | 3mm Thickness



PSH628
Cozumel



PSH631
Adriatic



PSH552
Cancun



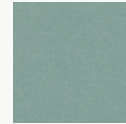
PSH564
Jazz



PSH517
Sky Stone



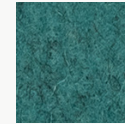
PSH232
Seaglass



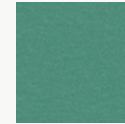
PSH641
Basil



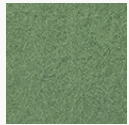
PSH629
Robin's Egg



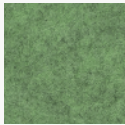
PSH642
Blue Spruce



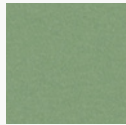
PSH618
Iguana



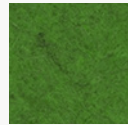
PSH213
Meadow



PSH303
Feather Moss



PSH619
Springtime



PSH223
Matrix



PSH164
Fresh Lime



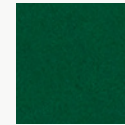
PSH225
Everglade



PSH226
Grove



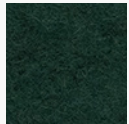
PSH298
Peacock



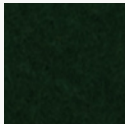
PSH234
Ocean Trench



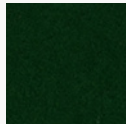
PSH311
Emerald



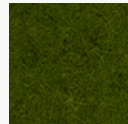
PSH626
Evergreen



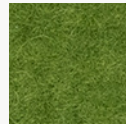
PSH228
Forest Haze



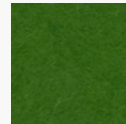
PSH227
Succulent



PSH563
Rosemary



PSH555
Hemlocks



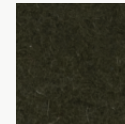
PSH012
Shamrock



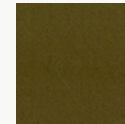
PSH554
Cyber Green



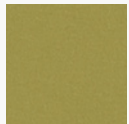
PSH501
Mire



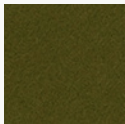
PSH506
Bracken



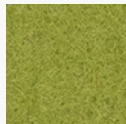
PSH312
Safari



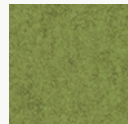
PSH611
Haybale



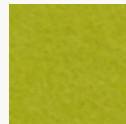
PSH230
Camouflage



PSH556
Avocado

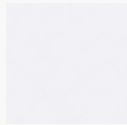


PSH562
Aurora



PSH013
Parakeet

Soundcore® | 1/2" Thickness



SND019
Linen



SND037
Paper



SND134
Oat



SND135
Vanilla Bean



SND105
Sand Dollar



SND109
Macadamia



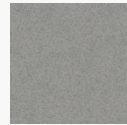
SND111
Lanai



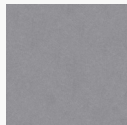
SND130
Buckskin



SND131
Abalone



SND125
Chinchilla



SND118
Anchor



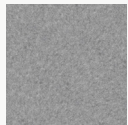
SND126
Wolfhound



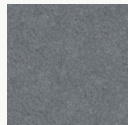
SND110
Starry Night



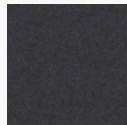
SND102
Morning Fog



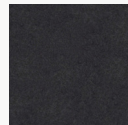
SND114
Lunar Dust



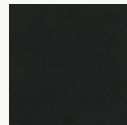
SND034
Granite Peak



SND132
Cast Iron



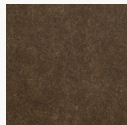
SND103
Storm Cloud



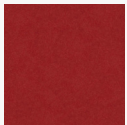
SND038
Inkwell



SND122
Briquette



SND127
Burnt Toast



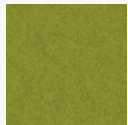
SND108
Ablaze



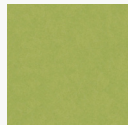
SND104
Pumpkin



SND106
Goldfinch



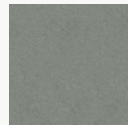
SND113
Gruner



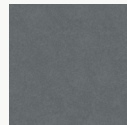
SND107
Grasshopper



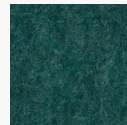
SND136
Clover



SND129
Dried Thyme



SND115
Mako



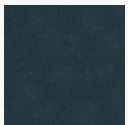
SND137
Cove



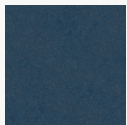
SND112
Tulum



SND121
Apatite



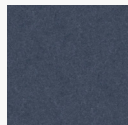
SND123
Chrysocolla



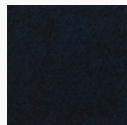
SND117
Serene



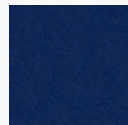
SND124
Ice Floe



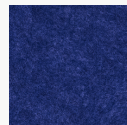
SND128
Arctic Ocean



SND133
Galactic



SND116
Blue Marlin



SND101
Commodore



SND042
Denim

Soundcore® Wood Textures | 1/2" Thickness



SND716
Dark Teak



SND792
Dark Oak



SND715
Dark Cherry



SND793
Vintage Maple



SND794
Warm Teak



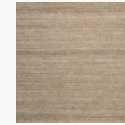
SND714
English Walnut



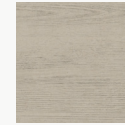
SND713
Honey Walnut



SND717
Warm Oak



SND790
Natural Teak



SND712
Natural Spruce



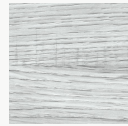
SND711
Bleached Cherry



SND795
Light Teak



SND709
White Maple



SND791
Gray Oak



SND710
Gray Teak